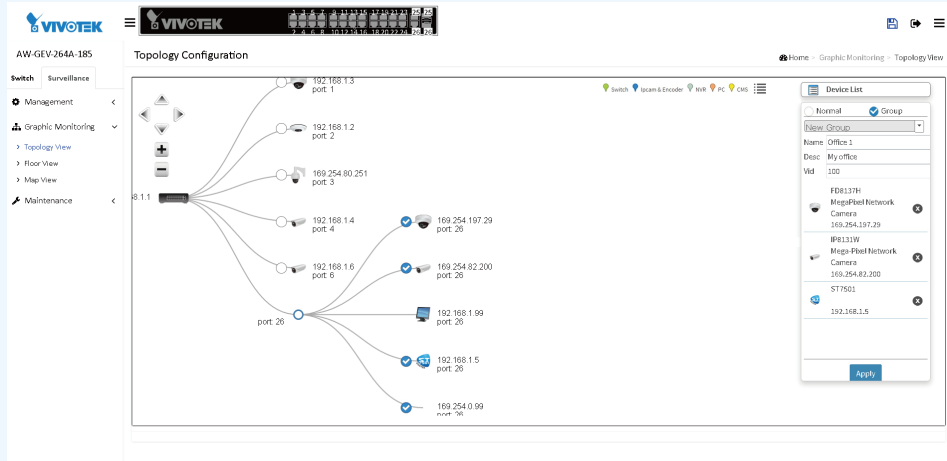


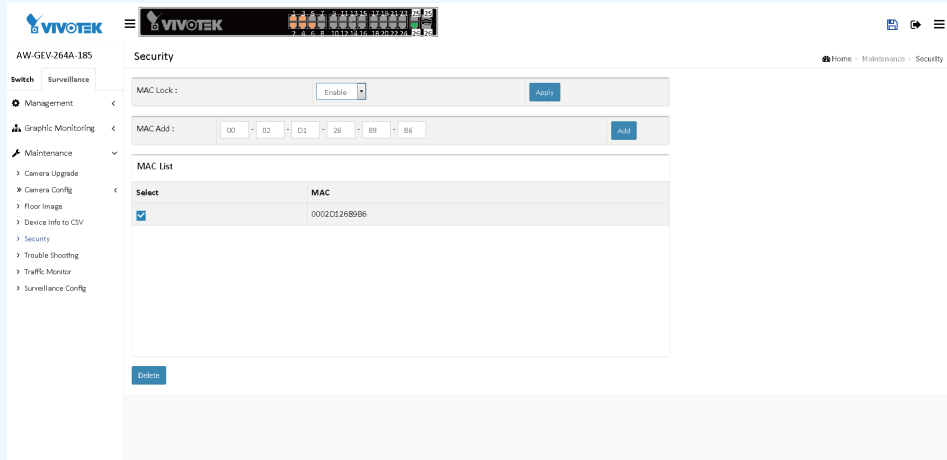
VLAN Setting

Hierarchical topology view allows administrators to easily build a VLAN.



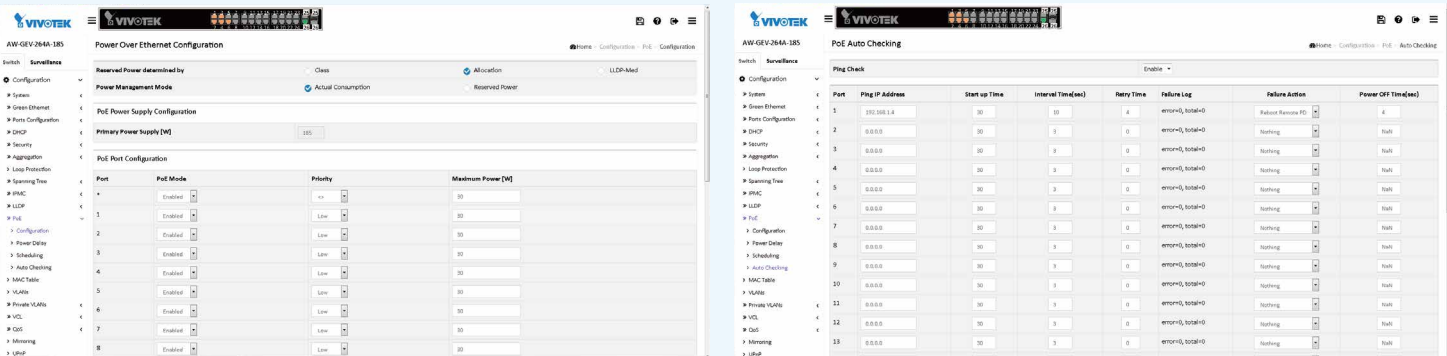
Port Security by Specific MAC

Enable MAC lock function to prevent unwanted connection from unknown devices.

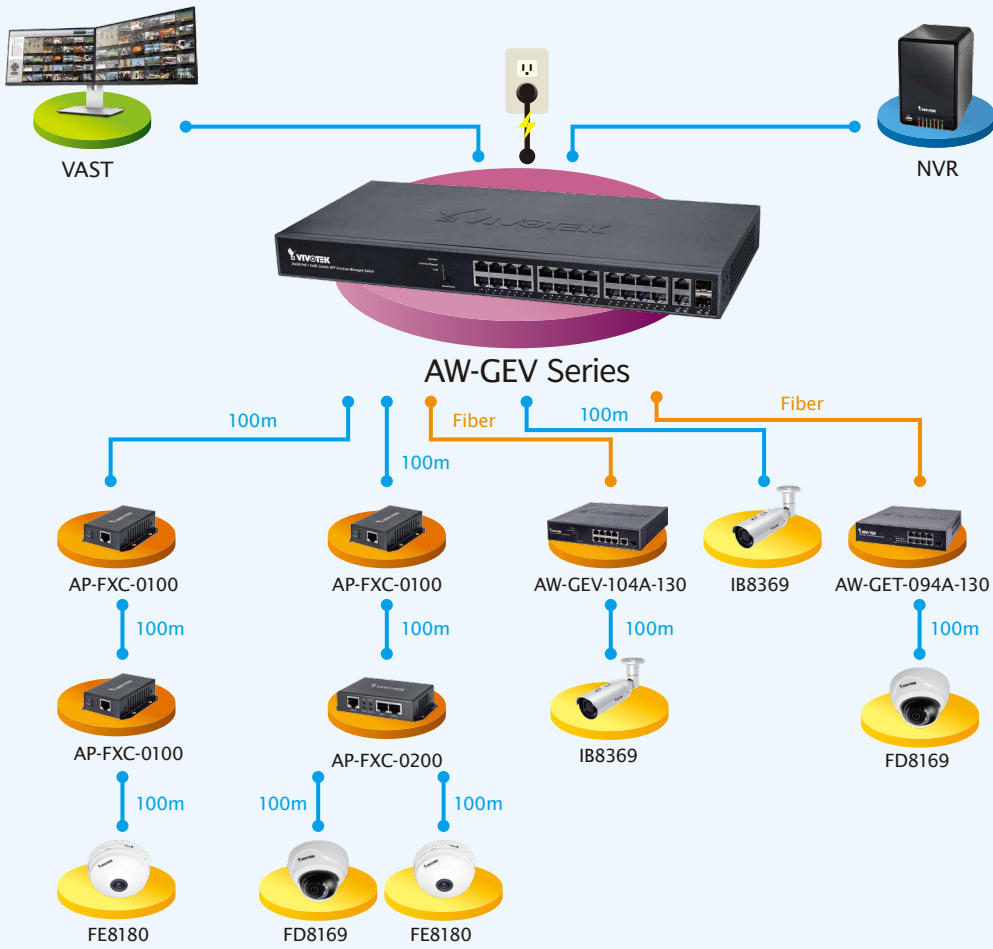


PoE Management

• Port configuration • On/off schedule • Camera alive checking • Time-delayed power transmission



Application



Ordering Information

Model Name	Product Description
VivoCam PoE Switch	
AW-GEV-264A-185	VivoCam L2 Managed 24xGE PoE + 2xcombo GE Switch, 185W
AW-GEV-264A-370	VivoCam L2 Managed 24xGE PoE + 2xcombo GE Switch, 370W
AW-GEV-104A-130	VivoCam L2 Managed 8xGE PoE + 2x GE UTP/SFP Switch, 130W
Web Smart PoE Switch	
AW-GET-094A-130	Web Smart 8xGE PoE +1xGE SFP Switch, 130W
PoE Extender	
AP-FXC-0100	1-Port Indoor FE PoE Extender
AP-FXC-0200	2-Port Indoor FE PoE Extender
IP Surveillance Device	
Network Camera	All VIVOTEK Network Cameras
Video Server	All VIVOTEK Video Servers
NVR	All VIVOTEK NVRs
CMS	VAST



VIVOTEK INC.
6F, No.192, Lien-Cheng Rd., Chung-Ho,
New Taipei City, 236, Taiwan, R.O.C.
T: +886-2-82455282 F: +886-2-82455532
E: sales@vivotek.com

VIVOTEK USA
2050 Ringwood Avenue,
San Jose, CA 95131
T: 408-773-8686 F: 408-773-8298
E: salesusa@vivotek.com

VIVOTEK Europe
Randstad 22-133, 1316BW Almere,
The Netherlands
T: +31(0)36-5298-434
E: sales@vivotek.com

VIVOTEK India
602, Best sky Tower, Plot No. F-5,
Netaji Subhash Place, Pitam Pura, Delhi-110 034
T: +91-11-45137465
E: salesindia@vivotek.com



AW-GEV Series VivoCam L2 Managed PoE Switch
World's first PoE switch with IP surveillance management functions

The VIVOTEK AW-GEV series, referred to as VivoCam PoE switch, is the world's first PoE switch with IP surveillance management functions. This switch is not only a standard L2 PoE switch, but also able to set up and configure VIVOTEK IP cameras, NVR and CMS. Using AW-GEV series, the VivoCam PoE switch allows users to find all VIVOTEK devices and deploy a surveillance network system automatically.

Product Information



AW-GEV-104A-130 AW-GEV-264A-185 / 370 VivoCam Layer 2 Managed PoE Switch

Managing IP Surveillance

- Auto Search for all VIVOTEK IP Cameras, Video Server, NVR and VAST
- Surveillance Topology/Floor/Google Map View
- Batch F/W Upgrade
- Easy Grouping, VLAN Setup & QoS
- Traffic Monitor & Trouble Shooting
- PoE Status

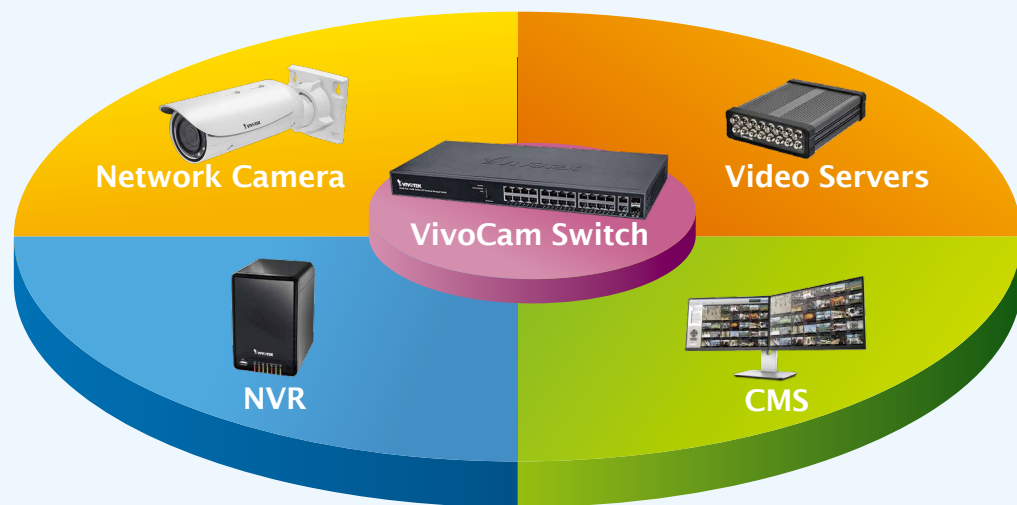
Managed L2 PoE Switch

- Supports DHCP Server
- Supports IPv4 Static Routing
- Supports Loop Detection for Maintenance
- Supports 802.1d (STP), 802.1w (RSTP) and 802.1s (MSTP)
- Supports LACP and Static Link Aggregation
- Supports SNMP v1/v2c/v3 for Management
- PoE Management

Managing IP Surveillance

Surveillance Management

The AW-GEV series is specifically designed for surveillance applications. It comes with an integrated surveillance interface to easily configure all VIVOTEK devices, such as network cameras, NVR, video servers and CMS.



Auto Discovery

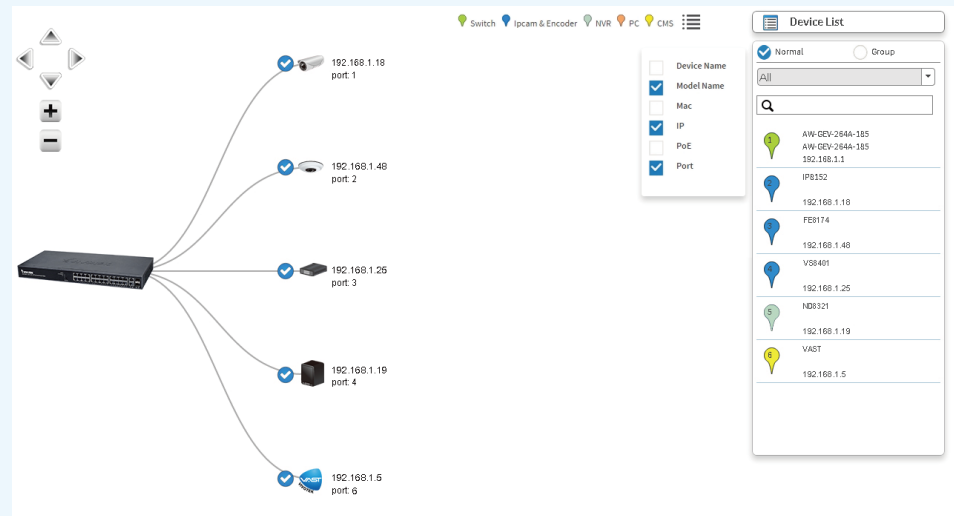
AW-GEV series can automatically discover any VIVOTEK's devices such as network cameras, video servers and NVR with a simple click of mouse.

Select	Status	Model Name	Device Name	MAC	IP Address	IP State	Version
<input type="checkbox"/>	On Line	FB8137H	MegaPixel Network Camera	00-02-c5-24-c3-10	169.254.197.39	Dynamic	0200a
<input type="checkbox"/>	On Line	S08363C	20x Zoom Mega-Pixel Speed Dome Network Camera	00-02-c5-21-50-FB	169.254.90.251	Dynamic	0200d
<input type="checkbox"/>	On Line	IPB131W	Mega-Pixel Network Camera	00-02-c5-28-52-CB	169.254.90.200	Dynamic	0300e
<input type="checkbox"/>	On Line	FB8173H	Mega-Pixel Network Camera	00-02-c5-8B-73-03	192.168.1.2	Dynamic	0200b
<input type="checkbox"/>	On Line	FB8173H	Mega-Pixel Network Camera	00-02-c5-2F-62-98	192.168.1.3	Dynamic	0300d
<input type="checkbox"/>	On Line	IB8E73H-E	Mega-Pixel Network Camera	00-02-c5-2F-50-4C	192.168.1.4	Dynamic	0300d
<input type="checkbox"/>	On Line	IB8E38H	IB8E38H	00-02-c5-2F-69-76	192.168.1.6	Dynamic	0300e

E-map

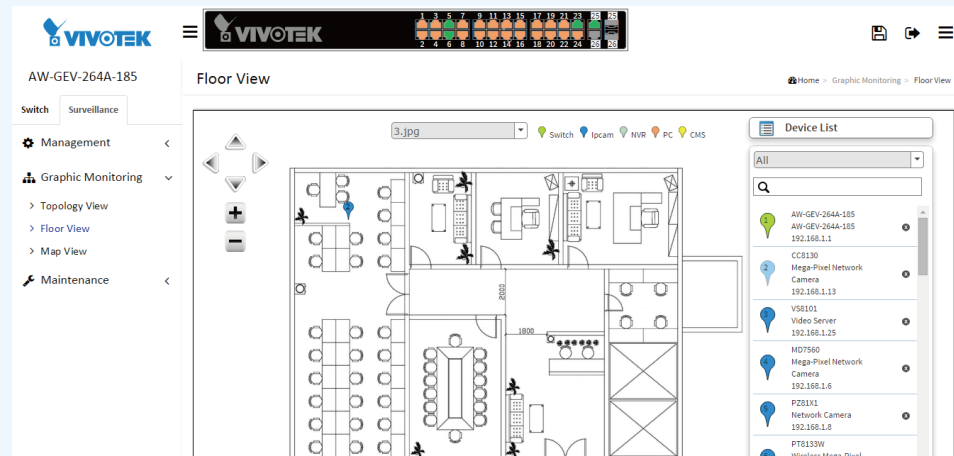
Topology View

Topology view allows administrators to quickly see the whole network topology at real time for easier planning and examination.



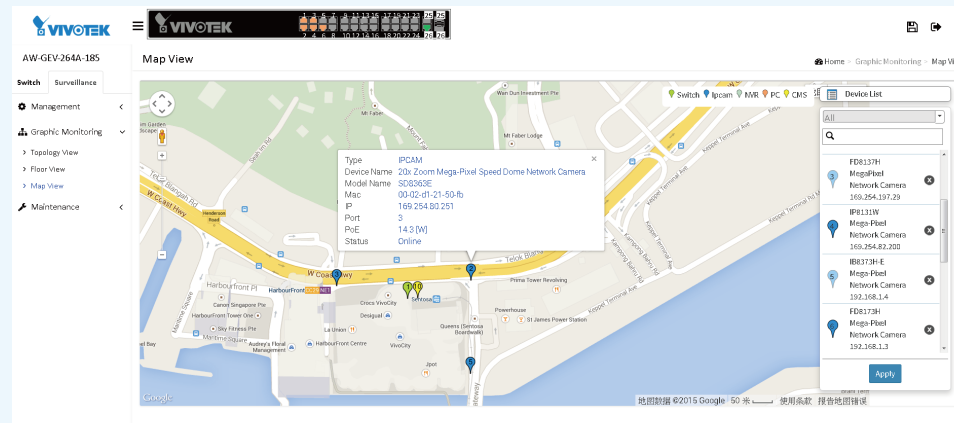
Floor View

Upload custom floor images. Floor view allows for quickly locating deployed surveillance devices.



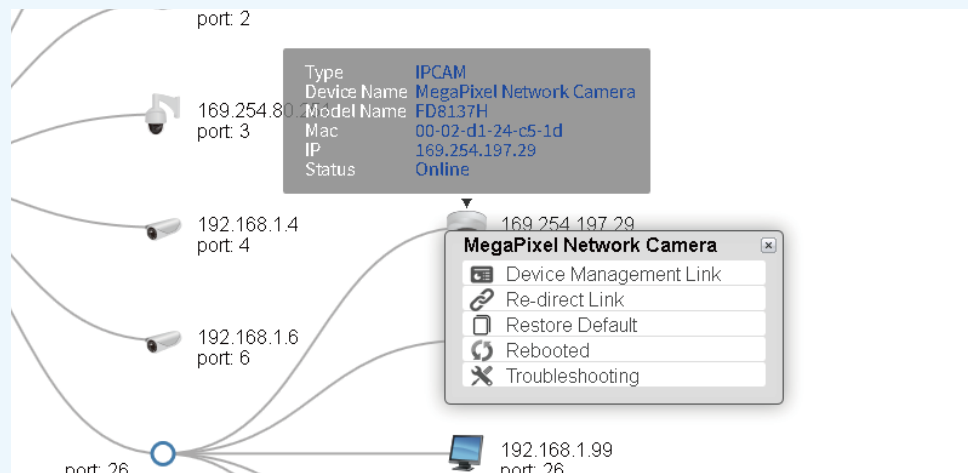
Google Map

Locate surveillance devices on Google map to simplify multi-site management of any large scale deployments.



Device Management

Easy install, configure, manage and monitor all surveillance devices in one network.



Traffic Monitor

Auto-generated comprehensive chart to show port-by-port network traffic status.



Trouble Shooting

Trouble shooting page to show the real-time verification result of each connection between switch port and surveillance device.

Status	Model Name	Device Name	MAC	IP Address	Version
Online	CC8130	Mega-Pixel Network Camera	00-01-cc-81-30-b2	192.168.1.13	0201a